




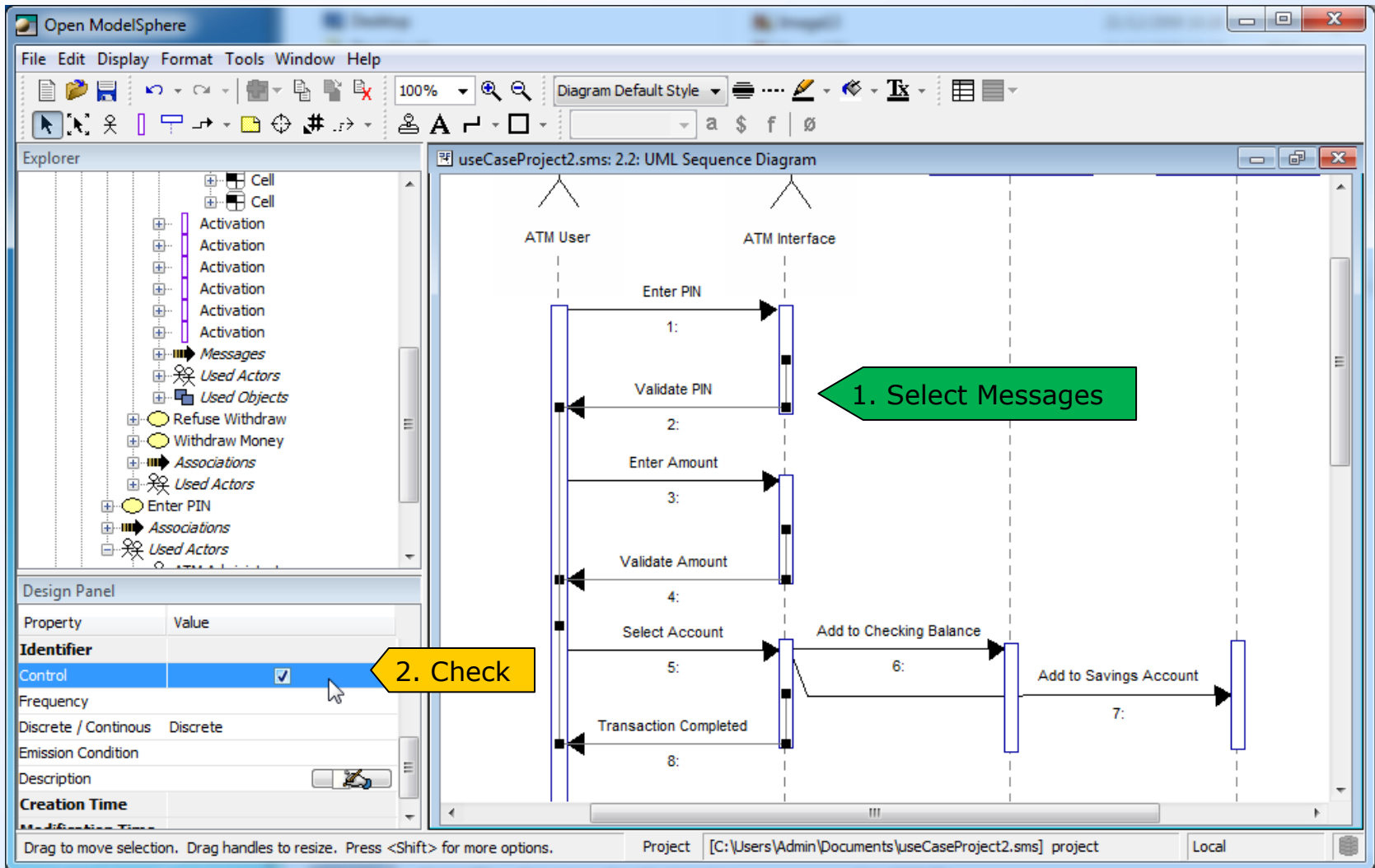
# How to Add Control Messages

- **This tutorial shows how to add control messages between activation boxes**

# Sequence of actions

- The green label describes the **first action** to do in the current screen capture. 
- The orange labels show the **following** actions. 
- The red label describes the **last action** in the sequence of actions. 

# How to Add Branch Messages



# How to Add Branch Messages

