




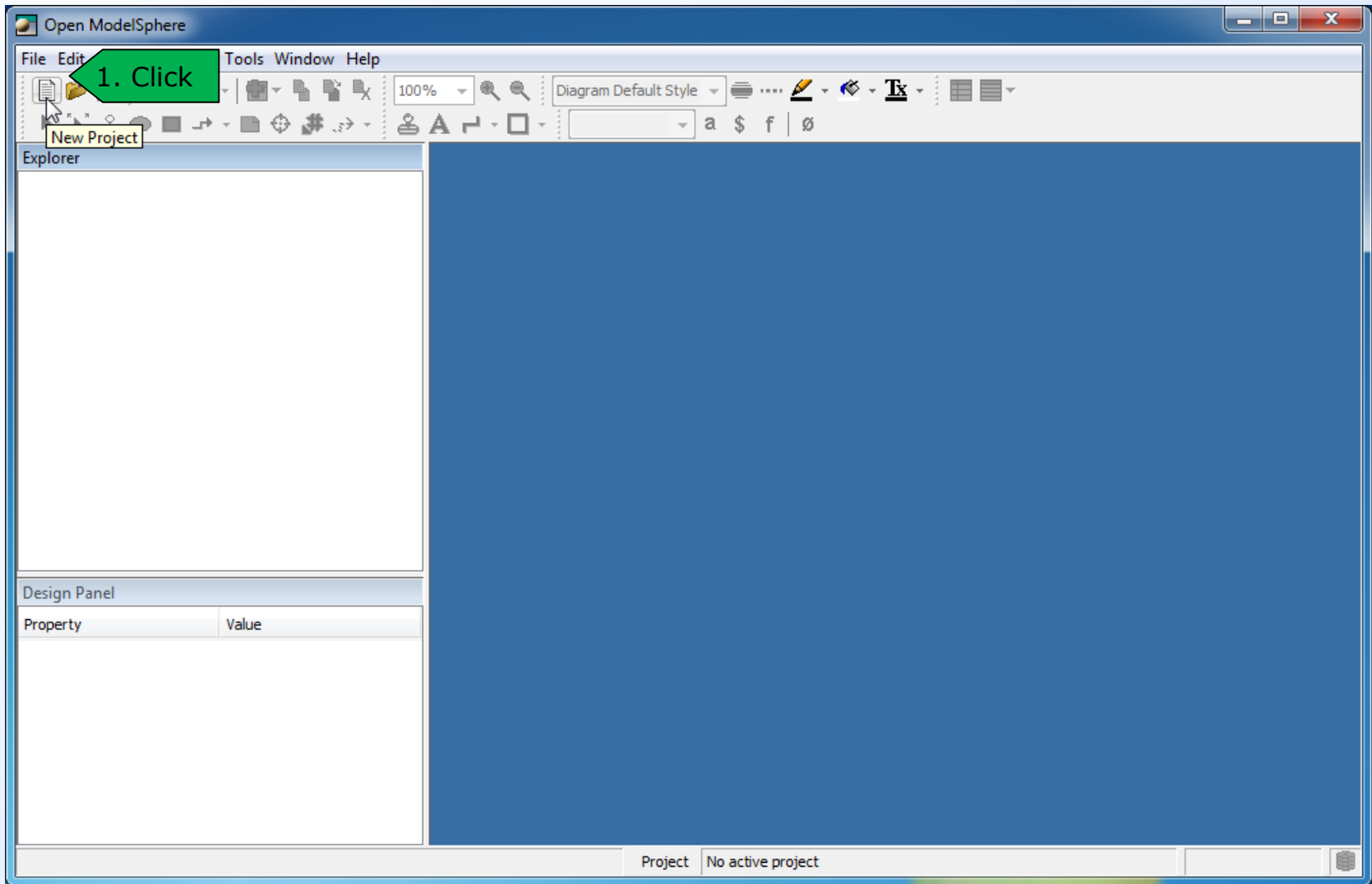
How to Create Use-Case Diagrams

- **This tutorial shows how to create use-case diagrams using the explorer**

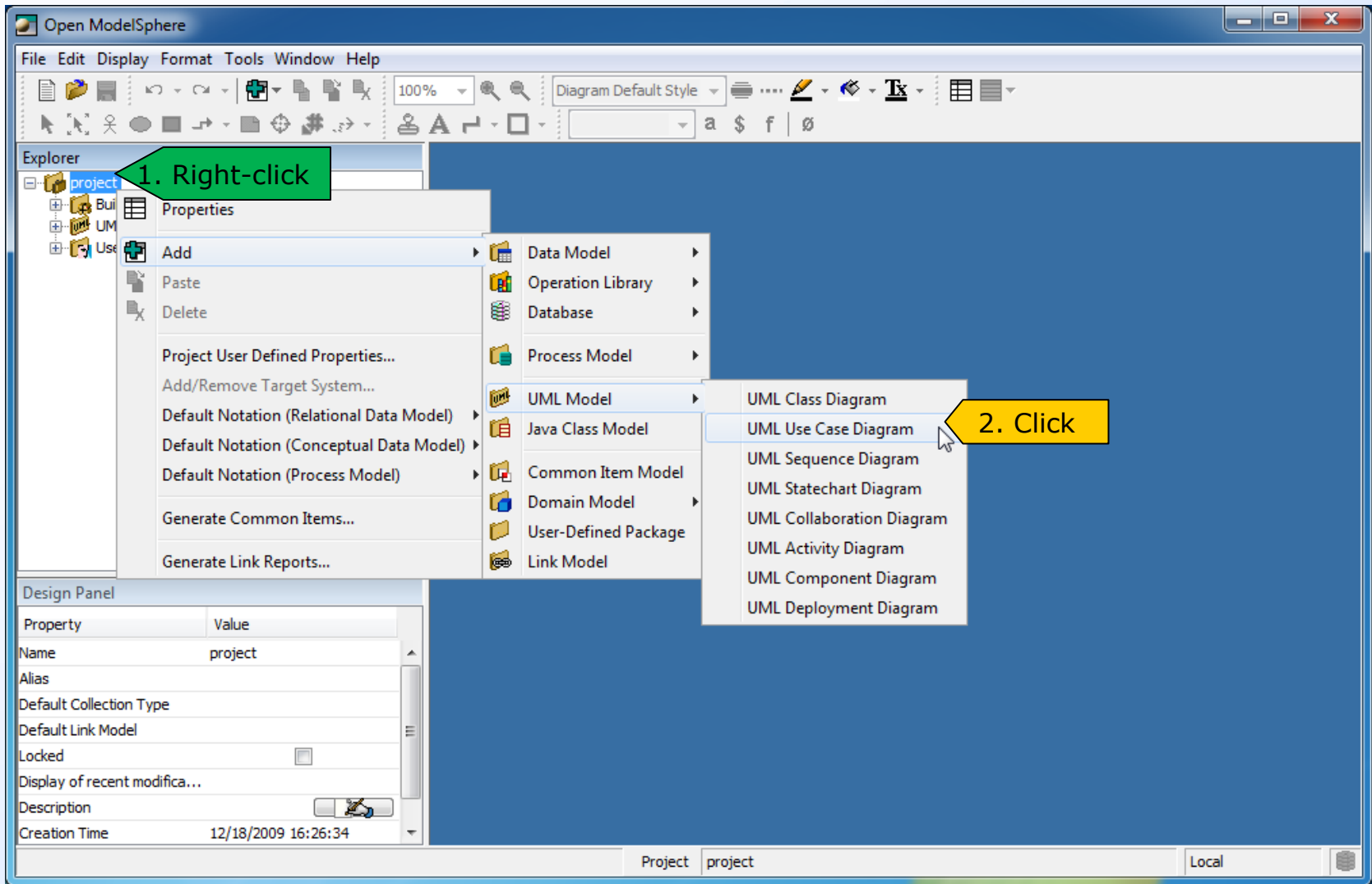
Sequence of actions

- The green label describes the **first action** to do in the current screen capture. 
- The orange labels show the **following** actions. 
- The red label describes the **last action** in the sequence of actions. 

How to Create Use-Case Diagrams



How to Create Use-Case Diagrams



How to Create Use-Case Diagrams

